

HOW TO CREATE WITH

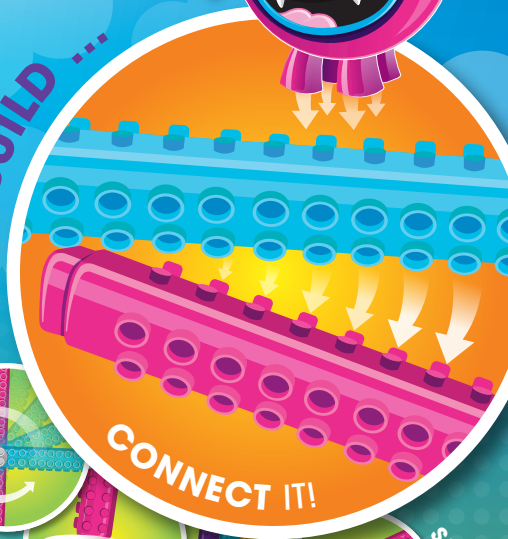
COLLECT ME  
& MY FRIENDS!  
LET'S PLAY!

# Artline® Stix

DRAW ...



BUILD ...



CONNECT IT!



SPIN IT!

... & PLAY!

BUILD  
A PUPPET  
WITH US!



● Connect and build markers together

● 20 fun washable non-toxic colours

● Limited edition connectable toys

Visit [artlinestix.com.au](http://artlinestix.com.au)  
to find out how to create  
more cool things!

## PUPPET

### BUILDING STEPS



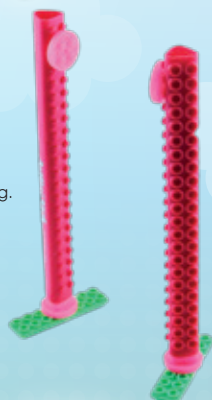
#### STEP 1

Construct 1 leg of the puppet using 1 pen and the following connectors: 1 female-male, 1 triangle-male and 1 rectangular connector.



#### STEP 2

Repeat Step 1 for the second leg.



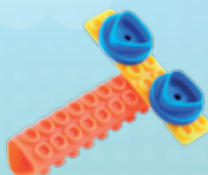
#### STEP 3

Construct the arm of the puppet by removing the cap of a pen and adding a female-male connector. Repeat this step to construct the second arm.



#### STEP 4

Add 2 triangle-male connectors to 1 rectangular connector to construct the eyes and head of the puppet. Attach a cap of a pen for the neck.



#### STEP 5

Use 5 caps to construct the middle structure of the puppet.



#### STEP 6

Attach all pieces to the middle structure to finalise the puppet.

### PARTS / CONNECTORS NEEDED:



2 x STIX MARKER



2 x STIX MARKER WITHOUT CAP



6 x STIX MARKER CAPS



3 x RECTANGULAR CONNECTOR



4 x MALE - FEMALE CONNECTOR



4 x TRIANGLE - MALE CONNECTOR