

HOW TO CREATE WITH

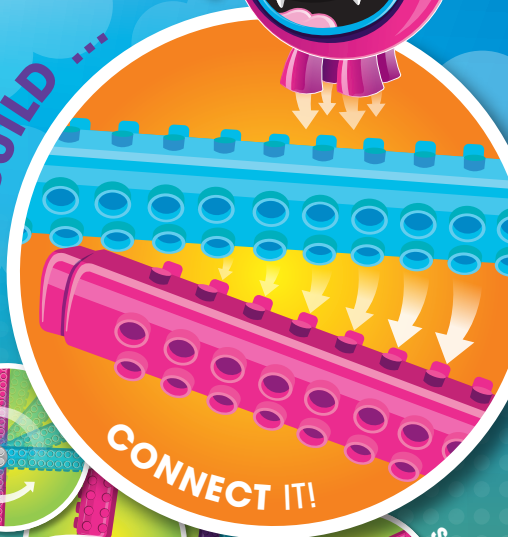
COLLECT ME
& MY FRIENDS!
LET'S PLAY!

Artline® Stix

DRAW ...



BUILD ...



CONNECT IT!

... & PLAY!



BUILD
A CAR
FOR ME!



SPIN IT!

- Connect and build markers together
- 20 fun washable non-toxic colours
- Limited edition connectable toys

Visit artlinestix.com.au
to find out how to create
more cool things!





CAR

BUILDING STEPS

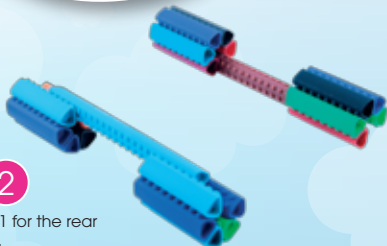
STEP 1

Required parts for the first step are 10 caps and 1 pen. Use 5 caps for each wheel and attach them to the pen as seen on the first image.



STEP 2

Repeat Step 1 for the rear set of wheels.



STEP 3

Connect a 45° triangle connector and a triangle-male connector to the end of a pen.



STEP 4

Repeat Step 3. Add 2 rectangular connectors to the construction and add an additional pen to the middle of the structure for extra strength. Finalise the top structure by adding a pen for the spoiler.



STEP 5

Connect the parts from Step 2 and 4 to finalise the car.



Find out how to make me at artlinestix.com.au today!



PARTS / CONNECTORS NEEDED:



6 x STIX MARKER



2 x RECTANGULAR CONNECTOR



2 x 45° TRIANGLE - CONNECTOR



20 x STIX MARKER CAP



3 x TRIANGLE - MALE CONNECTOR