

HOW TO CREATE WITH

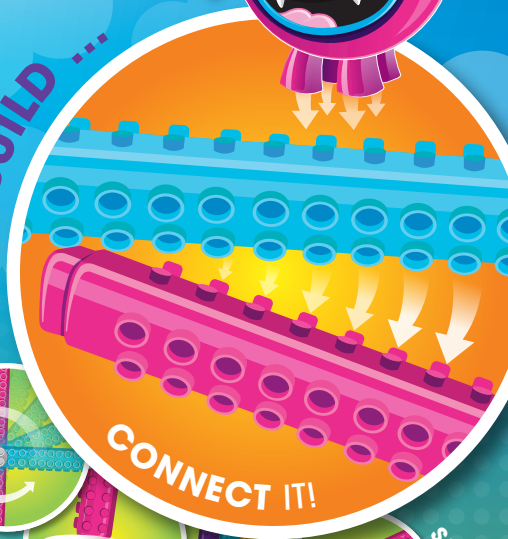
COLLECT ME
& MY FRIENDS!
LET'S PLAY!

Artline® Stix

DRAW ...



BUILD ...



CONNECT IT!

SPIN IT!

... & PLAY!

BUILD
A WINDMILL
FOR US!



- Connect and build markers together
- 20 fun washable non-toxic colours
- Limited edition connectable toys

Visit artlinestix.com.au
to find out how to create
more cool things!

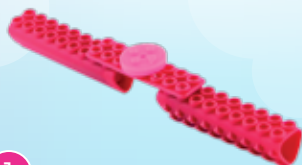
WINDMILL

BUILDING STEPS



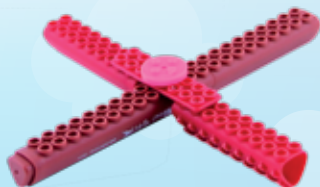
STEP 1

Construct the 2 blades of the windmill using 2 caps, 1 rectangular and 1 male-male connector.



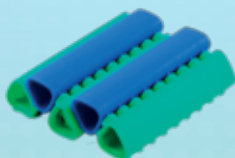
STEP 2

Add 1 pen to the construction of Step 1 to finalise the 4 blades.



STEP 3

Use 5 caps for the base of the windmill.



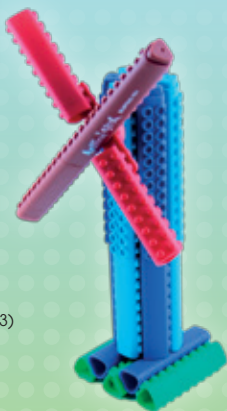
STEP 4

For the tower of the windmill we need 6 pens in total. Twist the cap of the pen once in clockwise direction. Do this for all 6 pens. Form a circular shape by connecting all pens together, making sure the female connectors are faced to the outside.



STEP 5

Attach the blades to the tower and place this on top of the base (Step 3) to finalise the windmill.



PARTS / CONNECTORS NEEDED:



7 x STIX MARKER



7 x STIX MARKER CAPS



1 x RECTANGULAR CONNECTOR



1 x MALE - MALE CONNECTOR

Find out how
to make me at
artlinestix.com.au
today!



PUPPET